

2021



KARAN JAVA[®]



ABOUT US

IKONIC is a Creative company who is in manufacturing, but adding value to your projects. Our Best in Class Standards for use of raw material and fabrication technique is the key for delivering quality products.

We offers an innovative and flexible portfolio of products and processes to create completely customized solutions and provides best-in-class, fast and reliable service to our customers pan India.

Signage & More - Other than signage we are actively helping architects, Product designers, graphic designers and interior designers to develop Products, Architectural Installations, Modules and Specialty Furniture and many more custom products

We as a Manufacturing Unit, We enjoy working with new modern materials and learning new techniques to handle them Equipped with best of the modern machines like CNC Router, Waterjet Cutting Machine & Flatbed Laser Machine enables us to get the best output with maximum precision

Our Caption – Mold Make Manufacture Explains everything in simple words about our Company and our Capabilities.

Established in 1985. Is a Manufacturing facility located in Mumbai, known in the industry for past 30 years handling projects from store façade signage to building paneling projects. Signage manufacturing is one of the largest share of JEMCO's Facility along with architectural installations, murals, sculpture & product development. Our reach is Pan India and have executed projects in almost every Corner of our country. Recently Extending our services in Middle East and Sri Lanka is the Challenge that we have taken up.



ABOUT US

Offering our clients with the best of our knowledge and experience we have gained in past 30 years, From Suggesting the right sizes, location, specifications and post installation services. Multiple roll out for signage and branding services is a specialty, our team is well versed with all the details of the logistics and installation on site.

Till today we have achieved a wide range and comprehensive list of clients located all over the India in sectors like Real Estate, Retail, Leisure and Hospitality, Financial Institutes, Educational Sectors and Specialty Projects like Park Furniture and Modules, Consumer Product developments.

We are Capable and Efficient to handle projects from of any size and scale. Right from making badges to Internal Signage & Street Signage to Sky Sign. In past many year client have trusted us to undertake projects which are highly sensitive to their brand image or to launch any of their new projects or products. In this Process we have worked with one of the top most architects, designers, product designers, graphics designers and visualizers in India and abroad. Translating Paper drawings to Final installation is what we do jointly with these creative minds and hence winning their trust in executing projects.

Execution of Turnkey projects is our specialty and we do it with lot dedication and comfort.

Our teams include the best of the skilled people by experience and academically also. JEMCO's top management team are qualified designers and engineer, this add an edge when working with highly technical teams from client's side.



PRODUCTS

Channel Letters Signs.
Solid Acrylic LED Signs.
Direction & Navigation Signs (Wayfinding)
Visual Display Modular Systems.
Interior Signs.
Exterior Sky Signs.
Hand Painted Graphics.
Building Film wraps.
Digital Sign Systems – Revenue & Information.
Information Totems & Brand Upstands.
Street Furniture and Modules.
Murals & Sculptures
Architectural Installations.
Fire Fighting & Emergency Evacuation Marking Systems.
Specialty Parking Signage and Marking.
Point of Purchase & Point of Sales



SECTORS & SEGMENTS

Real Estate (Corporates & Residential)
Malls, Food Courts & Super Market
Retails Large Format Stores.
Cinema Halls
Banks
Airports
Hotels, Restaurants & Café.
Club Houses
Edutainment & Entertainments Zone.
Schools, Colleges and Institutes.
Hospitals and Healing Centers.
Public Transport Hubs and Stations.
Street & Road Projects.
Tourist Attractions and Information.
Installations for Utility and Architectural Purpose.
Façade Features and Brand Activity Promotion.



MATERIALS

Stainless steel, Brass, Copper.
Aluminum and Aluminum Composite Panels (ACP).
Acrylic (PMMA) – Plexiglass, Pet G & Co Polymers.
Glass & Resins Casting Material.
Wood, Timber, Composite Plywood & Medium Density Fiber Board.
Compressed Cement Membrane Sheet
Homogenous Ceramic Sheets

FINISHES

Brush Finish & Chrome Finish in Stainless steel.
Gold Plating, brass antique, copper antiques and oxides
in Brass and Copper sheet metal.
Surface Printing on Glass and various Materials.
Polyurethane & Pure Polyester Coatings on Alloys & Metal Laquers.
Polishes & varnish on Wood and timbers.
Various Hand Finishes like Hammer Tone and Roughs.



OUR WORK PROCESS

step one

Understanding Clients Requirements.
Detailing out the best possible specifications.
Proposing Pricing and Costs.
Manufacture
Install
Maintain

step two

Getting Design Brief from Client
This is the first step on any project to start. First meeting the client or the customer, understanding the brief of the project and getting a site survey done accordingly. Taking technical details from the Project management team OR site engineers, and making provision in the signage manufacturing.

step three

Site Survey
After getting the brief from for the project, we send our one of the team members or a team to understand the details of the site in terms of sizes and structural provision for fixing of the signage on site.

Estimates / Quotes
Considering all aspects of the technical briefs and the details from the client, we share the options available to the client or the customer. After discussion we share the final quotes along with the scope of the work. Making client understand about the delivery schedule is also part of quote and pricing.



step four

Production

Our production is handled by our team of experienced people who have successfully delivered hundreds of projects in past three decades. Equipped with one of the best of the technics, machinery & skilled laborers.

step five

Delivery & Installation

Most of the projects require delivery and installation in parallel to the production of the signage in our facility. In such cases we deploy a parallel team who is well equipped for installation with better understanding of logistics and installation methods. Our production team handovers all the details of the product and mechanical details for ease of installation before dispatch of the material.



Our Idea of A Good Sign

Using Simplest of the Details for execution.

Achieving Quality, by using the best of the raw material to our knowledge.

Create Better and long lasting Solutions for our Customers.





INFORMATION

INFOGRAPHICS

SEARCH

UPSTAND

BRAND TOTEMS

BRANDS PLATES

PYLONS

Real Estate
Malls, Food Courts
Supper Market
Retails Stores
Cinema Halls
Banks
Airports Terminals
Hotels, Restaurants & Café
Entertainments Zone
Institute
Hospitals
Tourist Informations

MAPS

NAVIGATION

SAFETY SIGNS

DIRECTION

YOU ARE HERE

THIS WAY

INFOGRAPHICS

INFORMATION





SIGNAGE

ARCHITECTURAL INSTALLATIONS

MURAL & SCULPTURES

SPECIALITY FABRICATIONS

DIGITAL INTEGRATED SIGNS



SIGNAGE

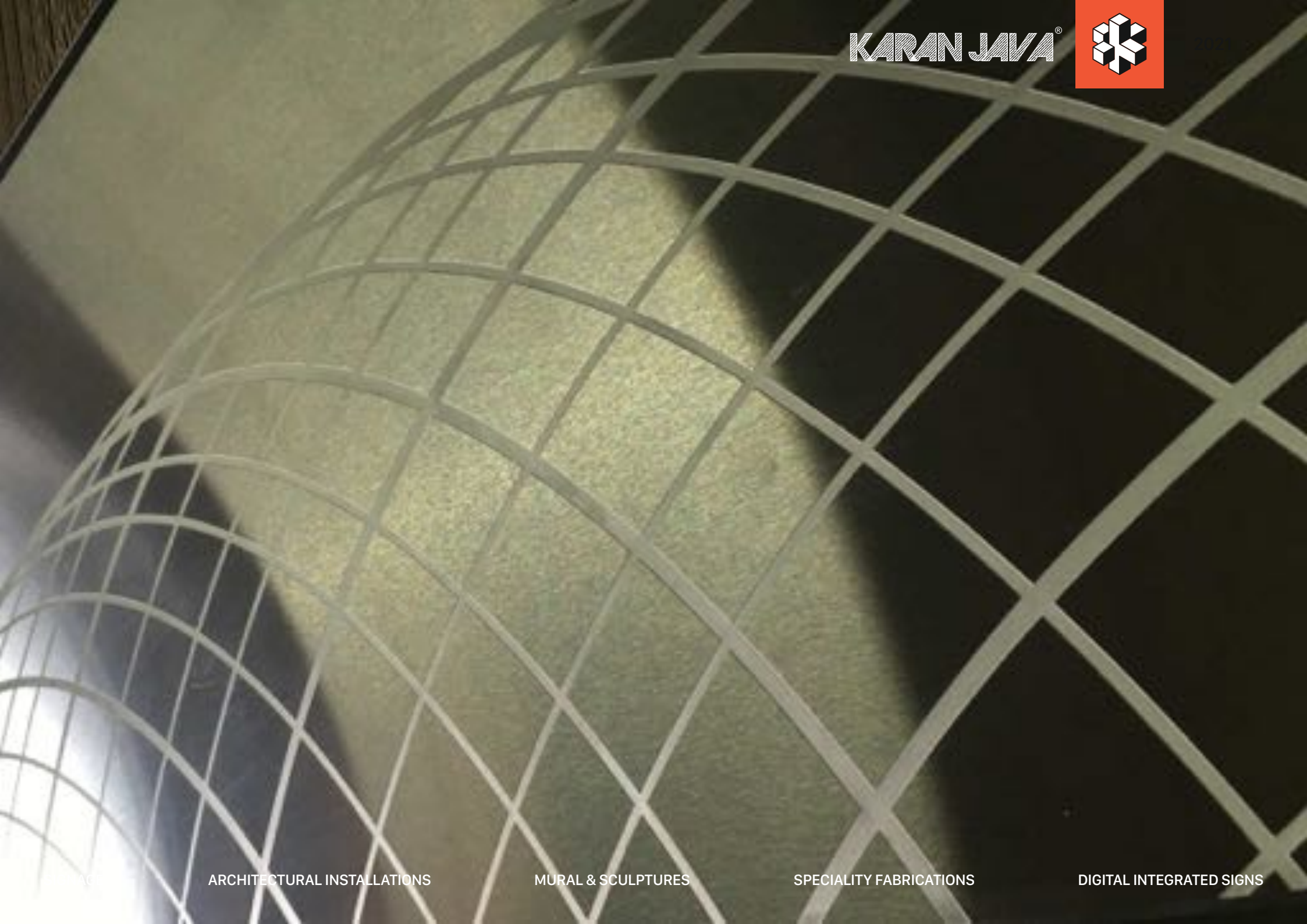
ARCHITECTURAL INSTALLATIONS

MURAL & SCULPTURES

SPECIALITY FABRICATIONS

DIGITAL INTEGRATED SIGNS

KARAN JAVA®



ARCHITECTURAL INSTALLATIONS

MURAL & SCULPTURES

SPECIALITY FABRICATIONS

DIGITAL INTEGRATED SIGNS



Kustomjee' | ELEMENTS





NATURE'S BLISS
1 WESTWIND MEADOWS

BAGAD
PROPERTIES



81-11-19
Ellelup























































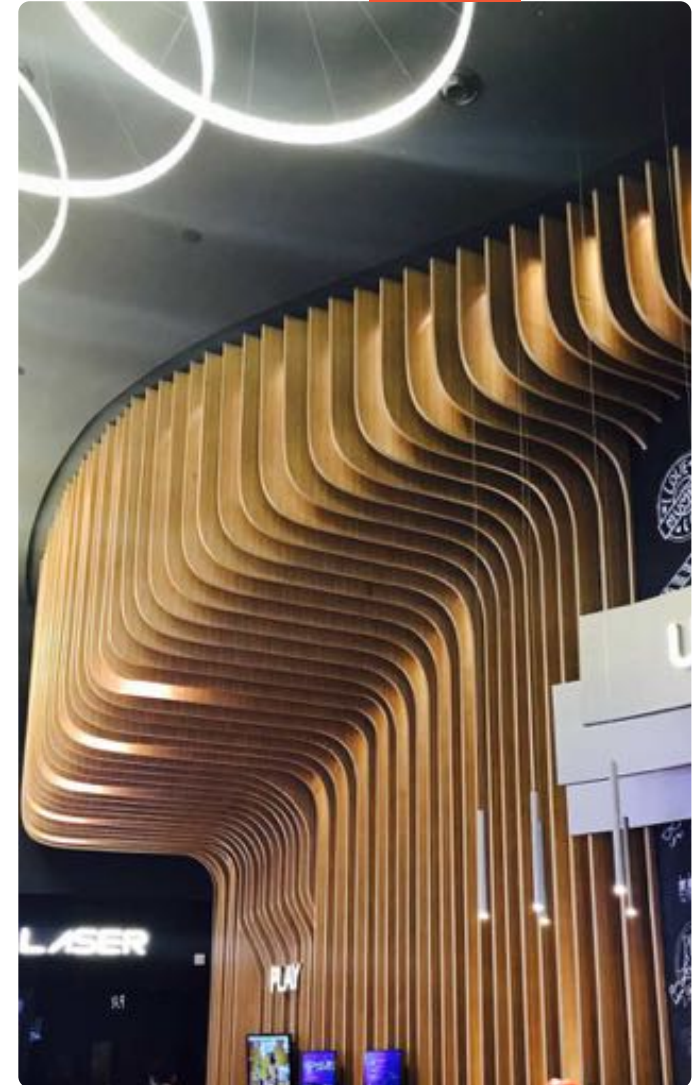


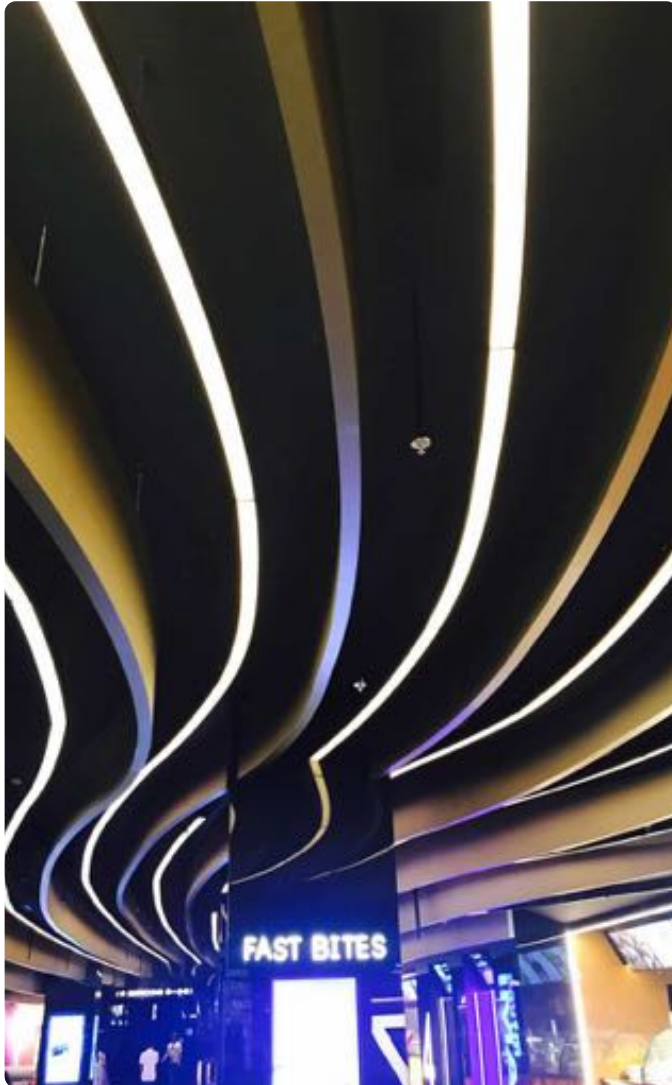


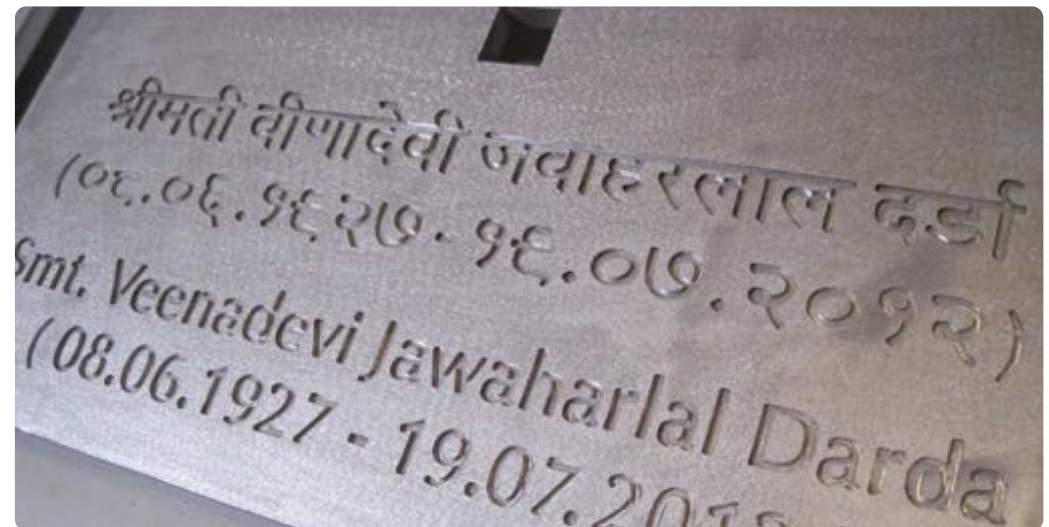


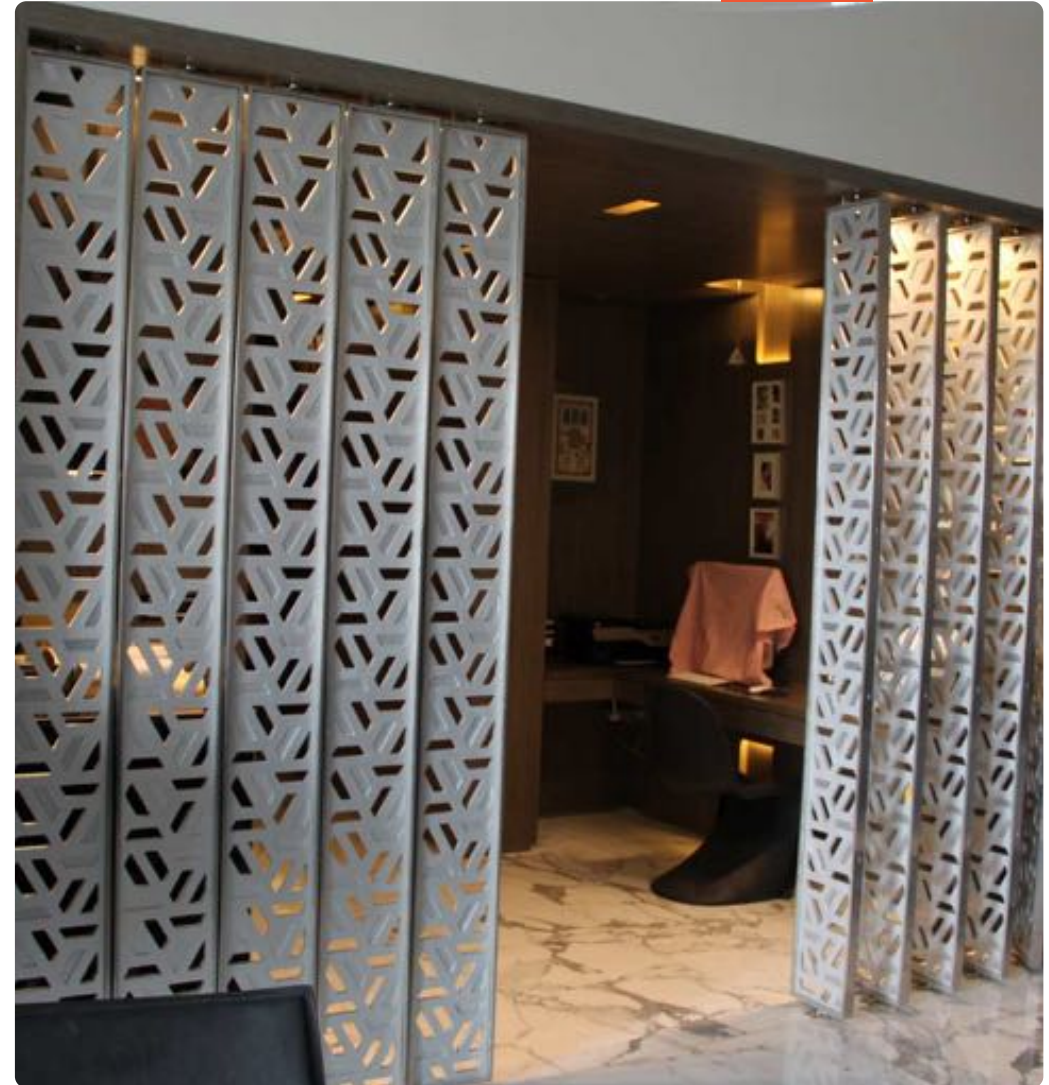
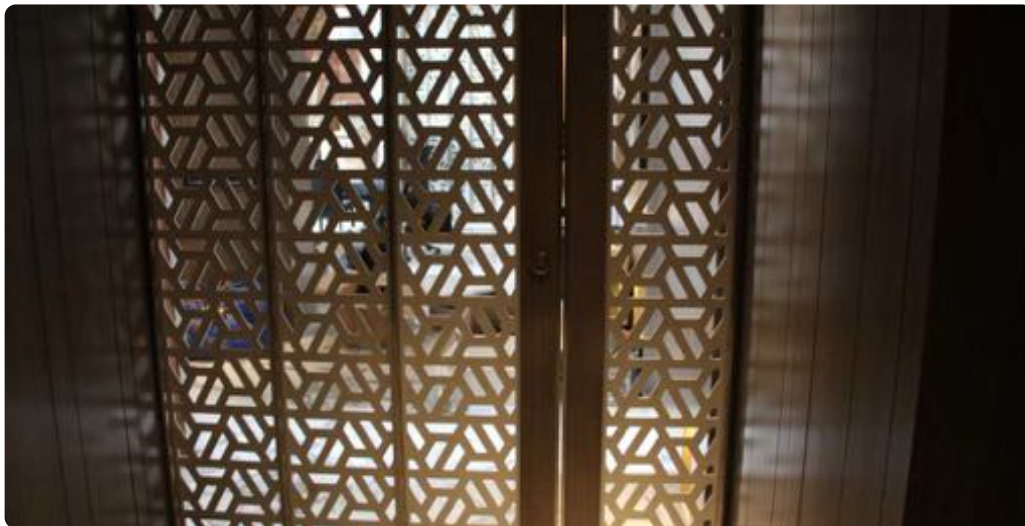


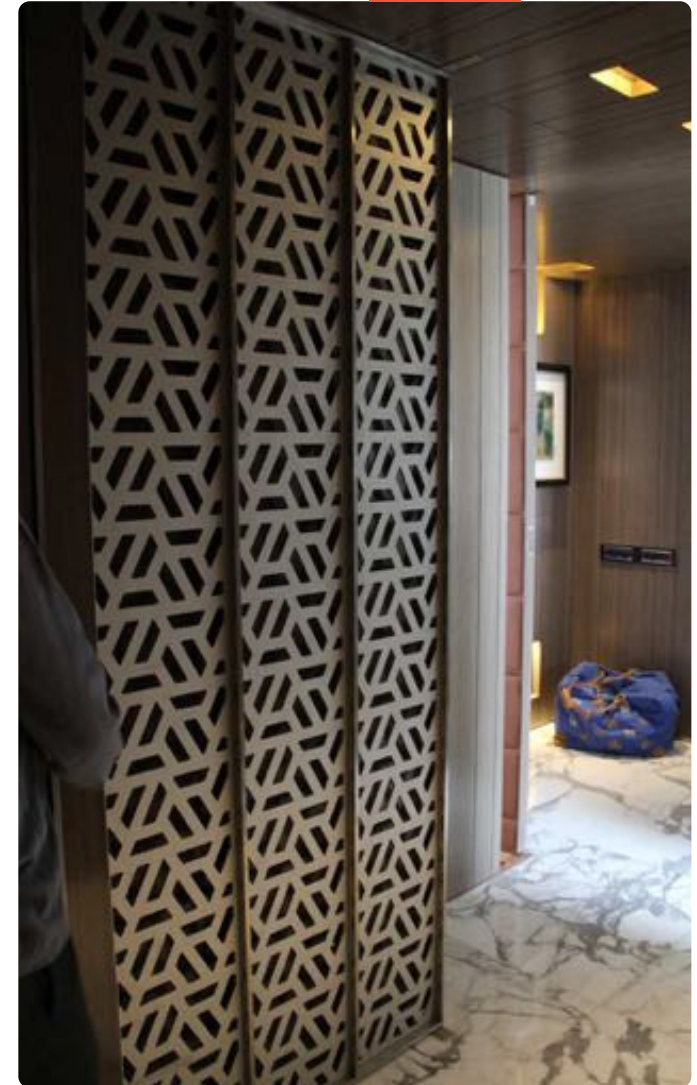


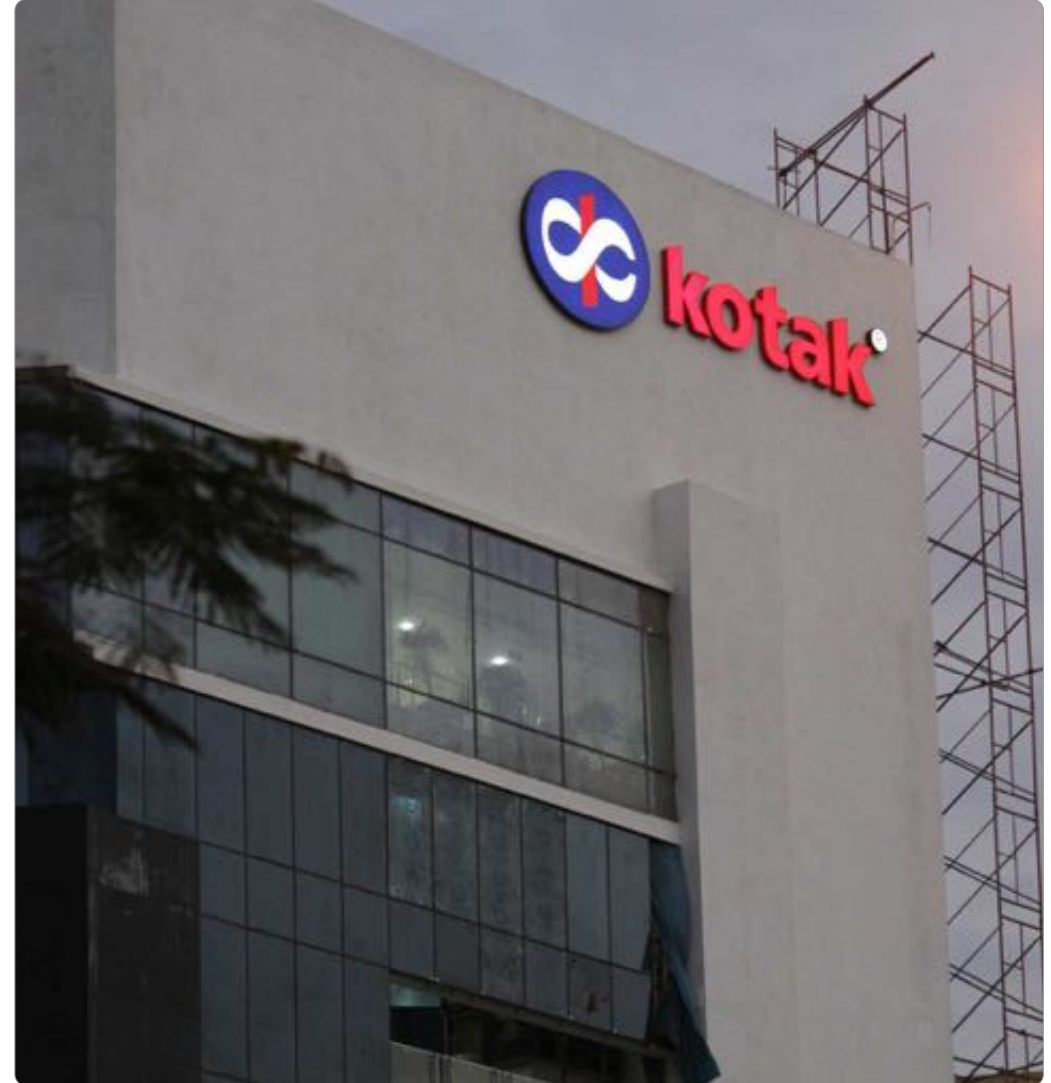


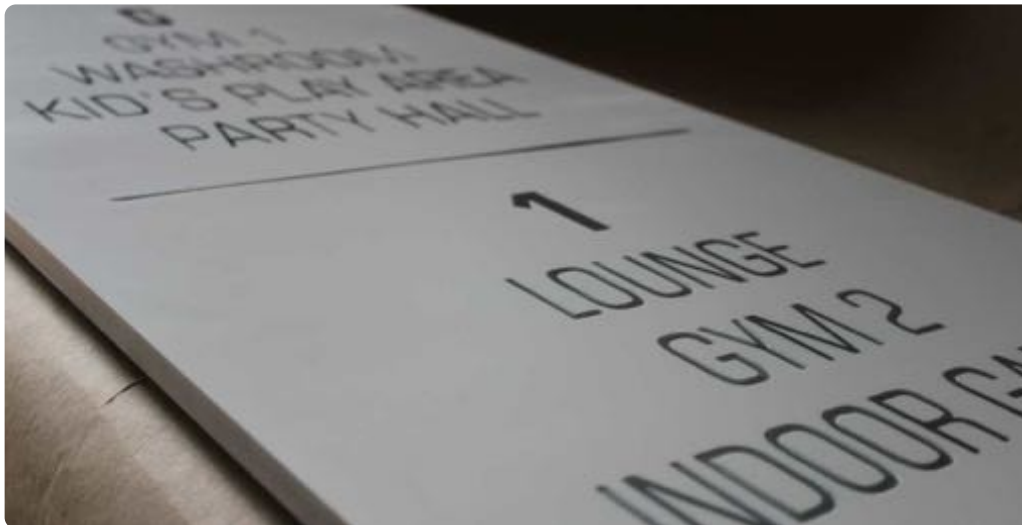


























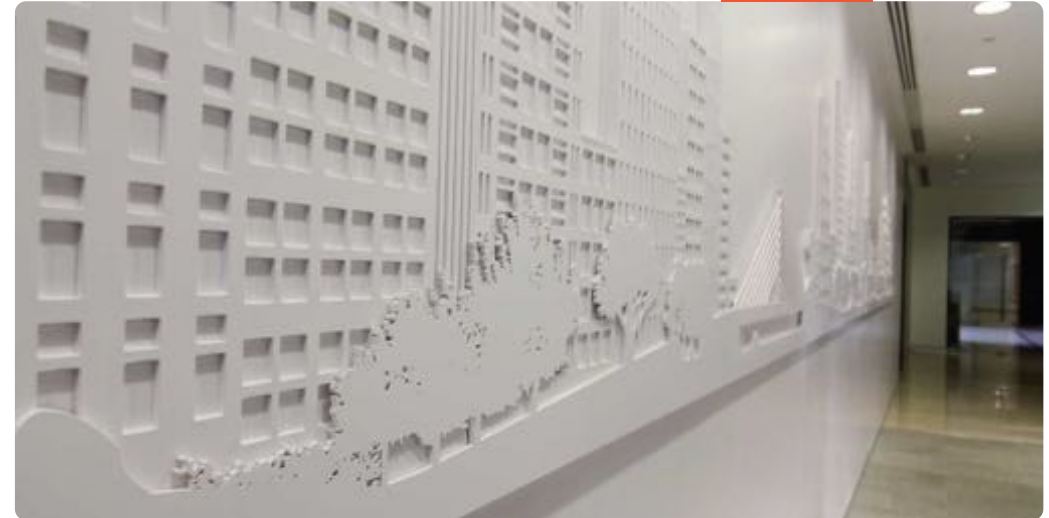










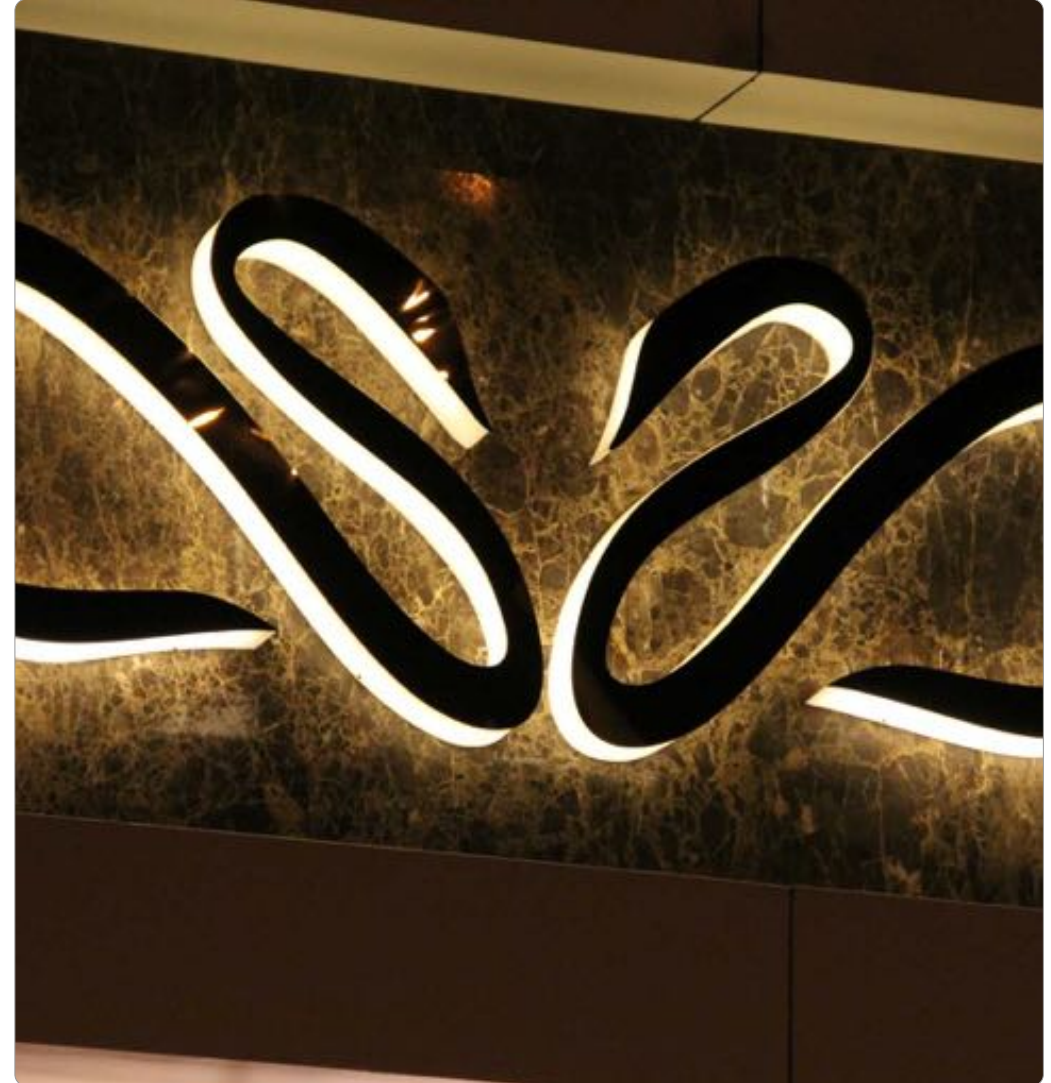






















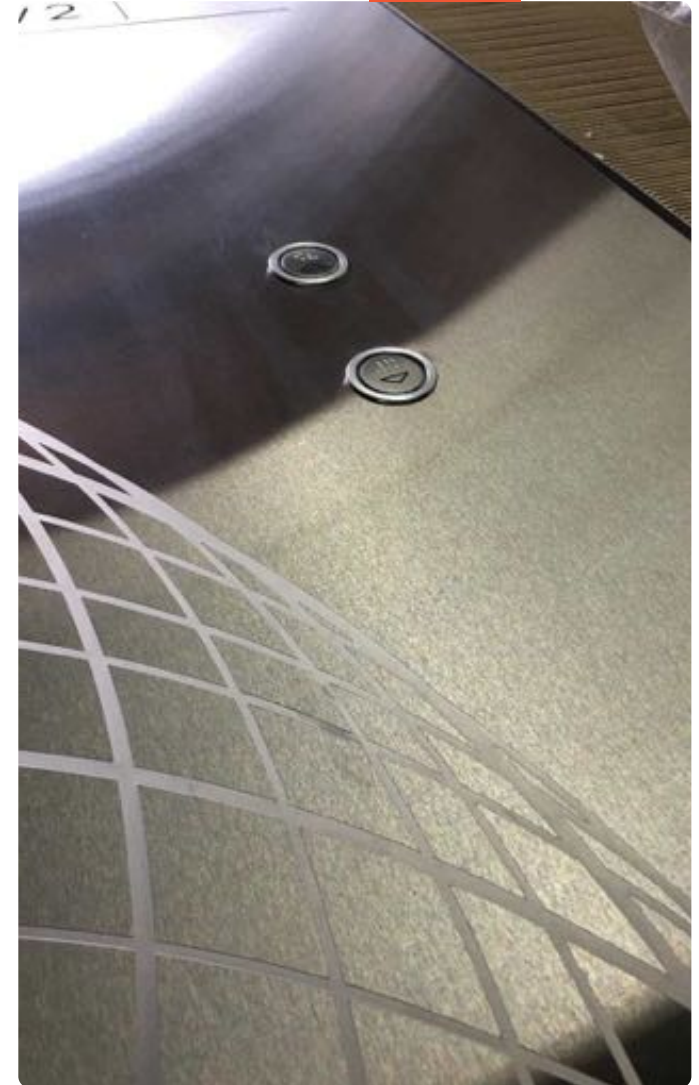














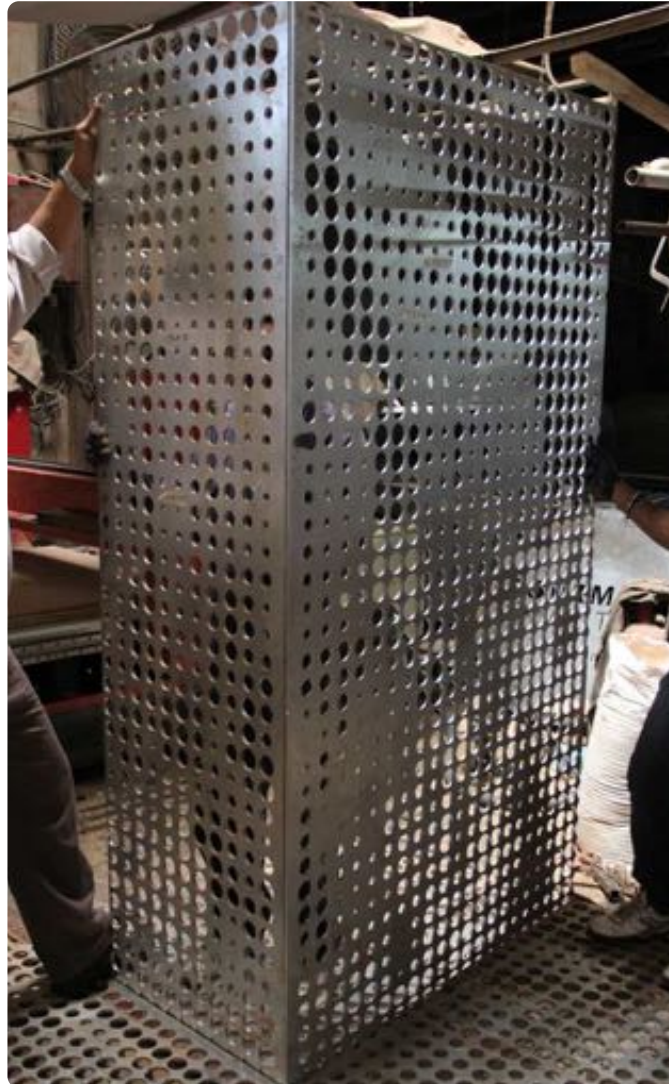






















IKONIC CREATIVES

12/2, Kalpataru Industrial Estate
Gala no. 26, Behind R Mall
Dhokali, Ghodbunder Road
Thane - 400 607. MH. India

kiran@jemcosigns.in
+91 98215 41702

iam@karanjava.com
+91 7373 46 3333

KARAN JAVA[®]



THANK YOU !

